



# INDOFINE Chemical Company, Inc.

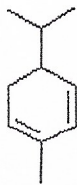
121 Stryker Lane, Bldg. 30, Suite 1 • Hillsborough, NJ 08844 • U.S.A.

Phone: (908) 359-6778 • FAX: (908) 359-1179

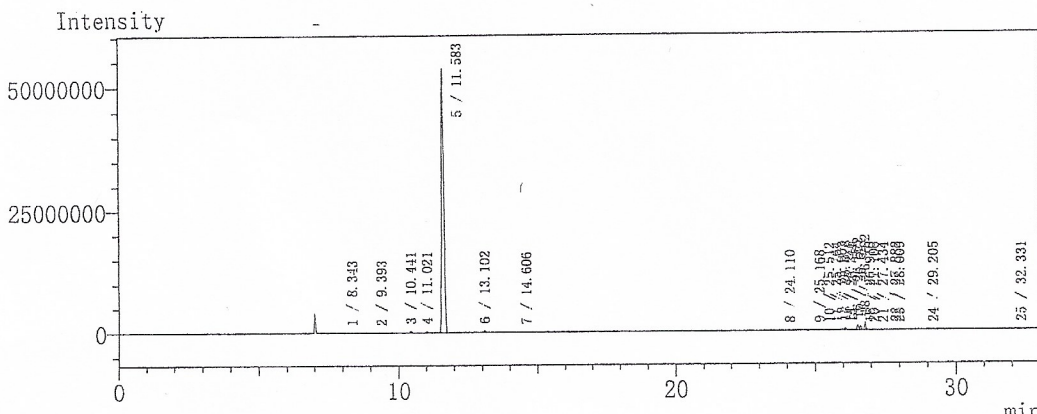
website: [www.indofinechemical.com](http://www.indofinechemical.com)

e-mail: [chemical@indofinechemical.com](mailto:chemical@indofinechemical.com)

## GC ANALYSIS



Catalog No.: 025411S  
Product Name: R-(-)-alpha-Phellandrene  
Lot No.: 2201632



1	8.343	1810	96127.559	1.021	7364	0.0023
2	9.393	6014	72667.269	0.998	31547	0.0098
3	10.441	267803	01340.473	0.961	1334132	0.4154
4	11.021	252572	12711.630	1.022	1245837	0.3879
5	11.583	53460845	96681.086	1.470	298409943	92.9143
6	13.102	326805	82597.610	1.010	1504480	0.4684
7	14.606	21891	16133.342	1.016	101741	0.0317
8	24.110	15226	77298.002	1.061	62366	0.0194
9	25.168	18800	17248.242	1.134	70601	0.0220
10	25.512	63210	79970.088	1.130	321447	0.1001
11	25.764	31726	82363.743	0.000	119815	0.0373
12	25.963	219634	36914.803	0.000	1380012	0.4297
13	26.078	395296	13073.615	0.000	1520530	0.4734
14	26.246	113575	0.000	0.000	462743	0.1441
15	26.311	62030	0.000	0.000	176180	0.0549
16	26.522	991667	73765.424	0.000	4339564	1.3512
17	26.621	811147	53098.594	0.000	2925055	0.9108
18	26.782	1619707	08740.585	1.048	6219618	1.9366
19	26.970	46261	83807.433	0.000	195204	0.0608
20	27.106	59305	05183.354	0.000	221956	0.0691
21	27.434	1873	53684.793	1.111	7510	0.0023
22	27.882	103666	30943.863	1.035	394059	0.1227
23	28.009	6902	41073.151	0.000	25695	0.0080
24	29.205	8350	75558.330	1.062	32943	0.0103
25	32.331	12780	77333.566	1.020	56606	0.0176
		58918895			321166948	100.0000

Prepared by:  
*Ramesh Mandadi*  
Ramesh Mandadi  
Director of Operations

Reviewed and Approved by:  
*Sujata Moton*  
Sujata Moton  
VP